



ACACIA CYANOPHYLLA



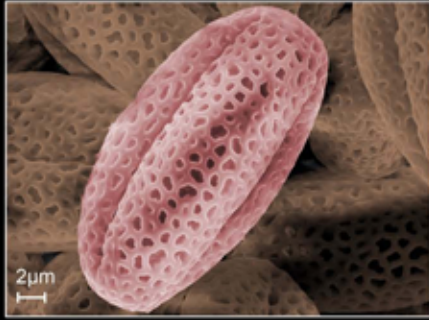
ACACIA CYANOPHYLLA



PINUS SYLVESTRIS



PINUS SYLVESTRIS



CORYLUS AVELLANA



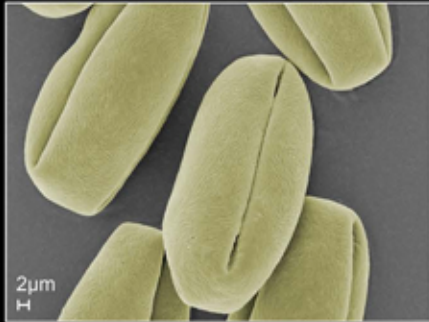
CORYLUS AVELLANA



PRUNUS AVIUM



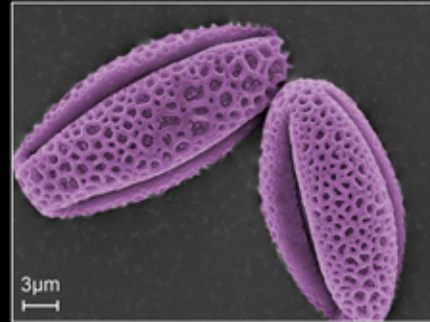
PRUNUS AVIUM



CRATAEGUS MONOGYNA



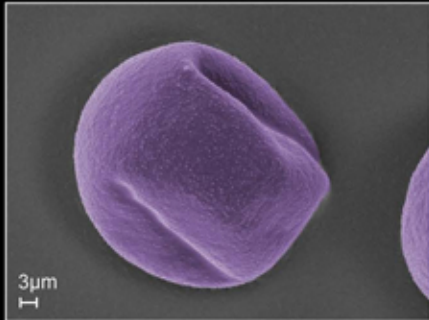
CRATAEGUS MONOGYNA



SALIX CAPREA



SALIX CAPREA



FAGUS SYLVATICA



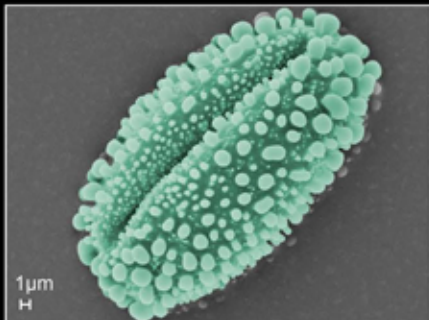
FAGUS SYLVATICA



SORBUS ARIA



SORBUS ARIA



ILEX AQUIFOLIUM



ILEX AQUIFOLIUM



MALUS DOMESTICA



MALUS DOMESTICA



LABURNUM ANAGYROIDES



LABURNUM ANAGYROIDES



AESCULUS CARNEA



AESCULUS CARNEA

POLLEN: TREES

A COLLECTION OF SCANNING ELECTRON MICROSCOPE IMAGES AND PHOTOGRAPHS BY PROF. MICHAEL PASCOE