



*ALLIARIA PETIOLATA*



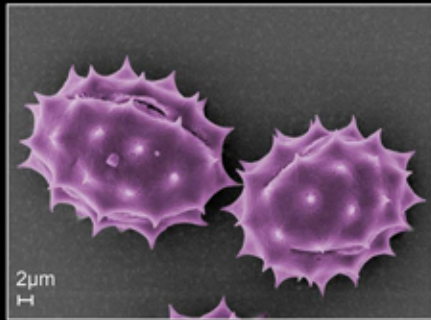
*ALLIARIA PETIOLATA*



*CENTAUREA NIGRA*



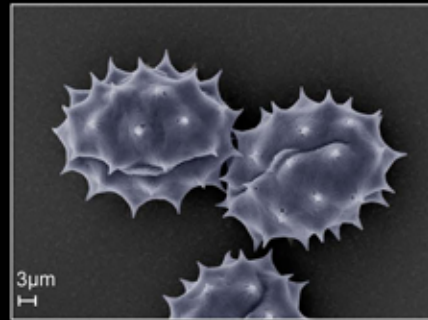
*CENTAUREA NIGRA*



*ANTHEMIS ARVENSIS*



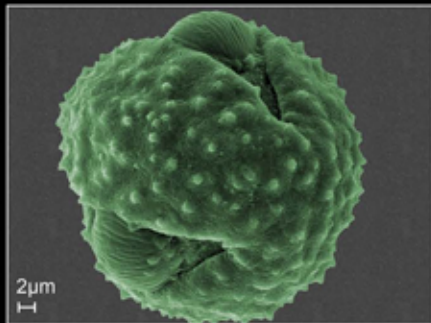
*ANTHEMIS ARVENSIS*



*GLEBIONIS SEGETUM*



*GLEBIONIS SEGETUM*



*ARCTIUM MINUS*



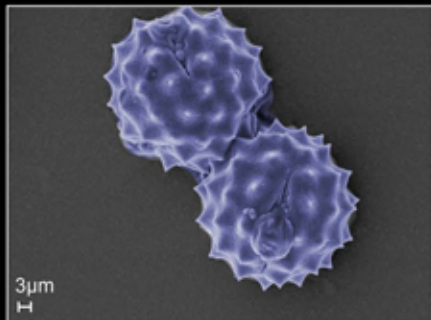
*ARCTIUM MINUS*



*CALYSTEGIA SILVATICA*



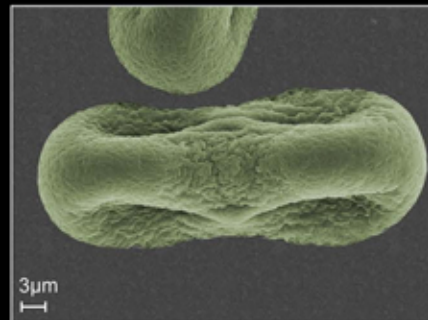
*CALYSTEGIA SILVATICA*



*CARDUUS TENUIFLORUS*



*CARDUUS TENUIFLORUS*



*CONOPODIUM MAJUS*



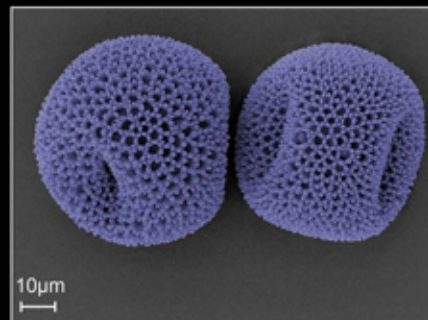
*CONOPODIUM MAJUS*



*CENTAUREA MONTANA*



*CENTAUREA MONTANA*



*GERANIUM MOLLE*



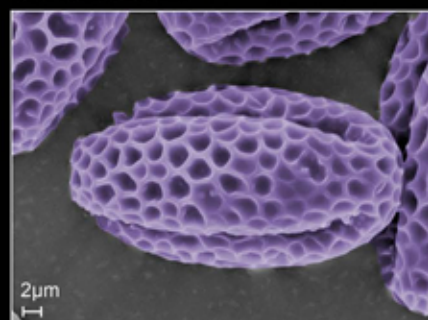
*GERANIUM MOLLE*



*CENTAUREA CYANUS*



*CENTAUREA CYANUS*



*CRAMBE MARITIMA*



*CRAMBE MARITIMA*

# POLLEN: WILDFLOWERS

A COLLECTION OF SCANNING ELECTRON MICROSCOPE IMAGES AND PHOTOGRAPHS BY PROF. MICHAEL PASCOE