

Wakehurst Place-Kew



Millenium Seed Bank-Kew







Seed collecting and cleaning



X-ray-determining the potential for germination

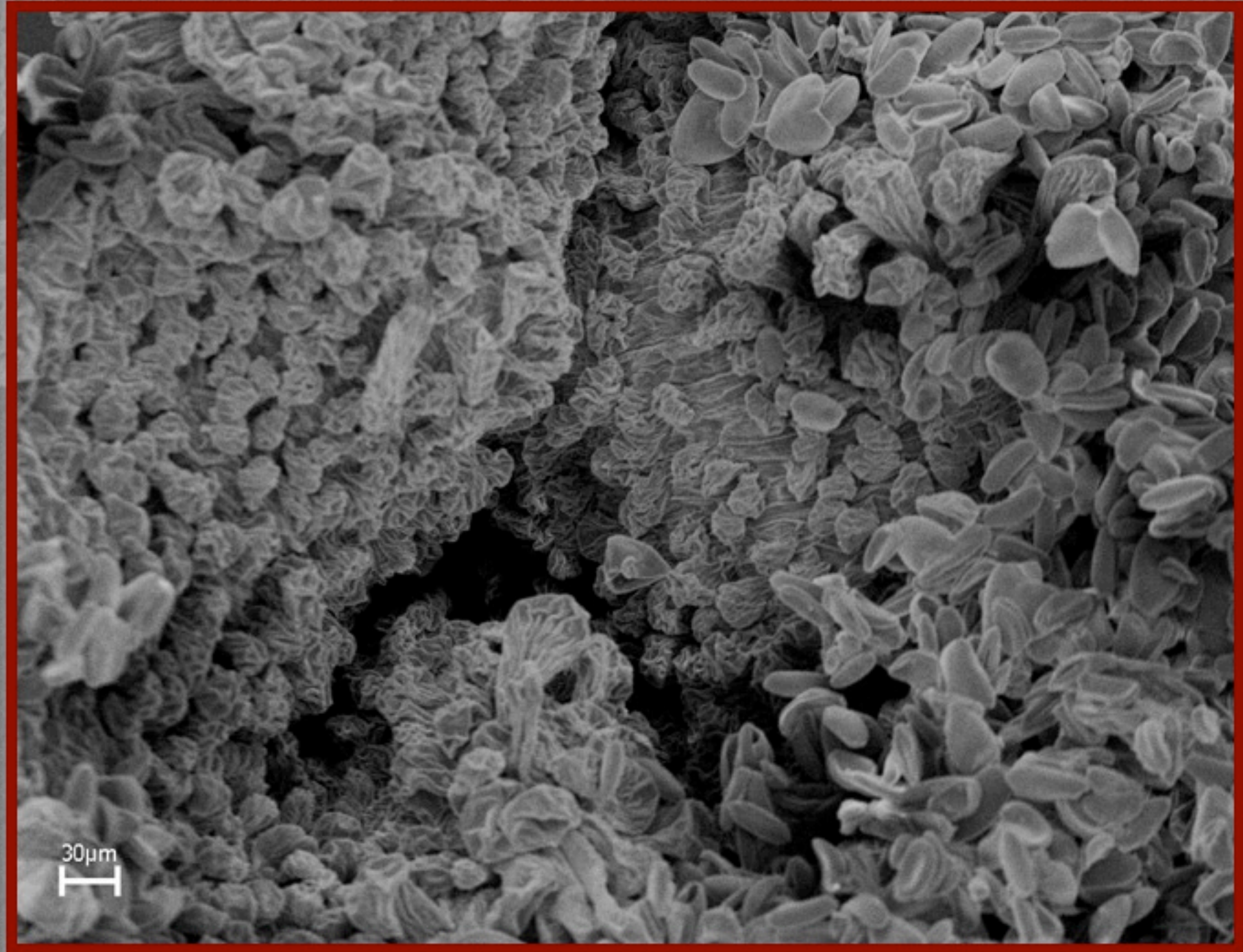


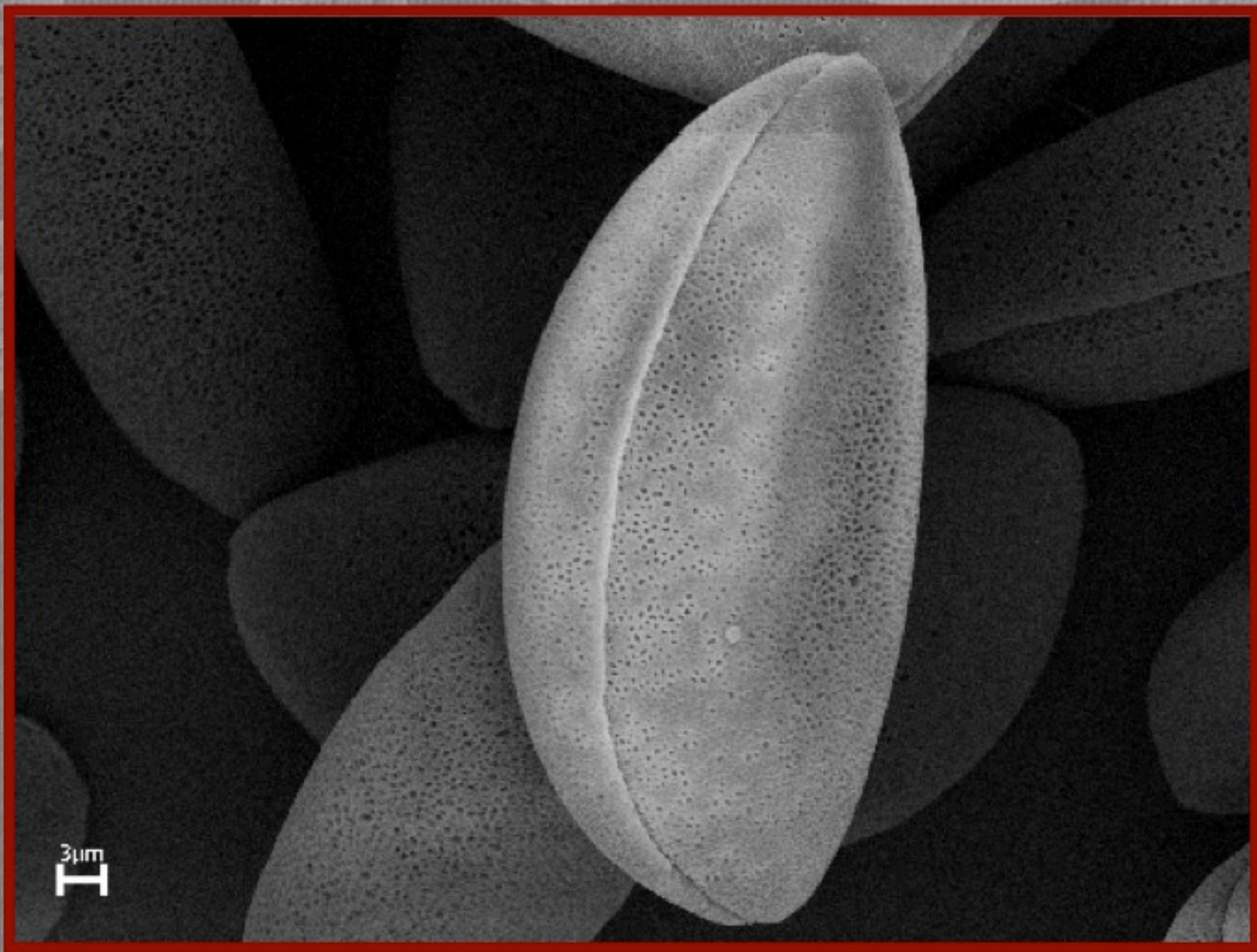
Seed storage



Seed storage in the vaults at -20°C





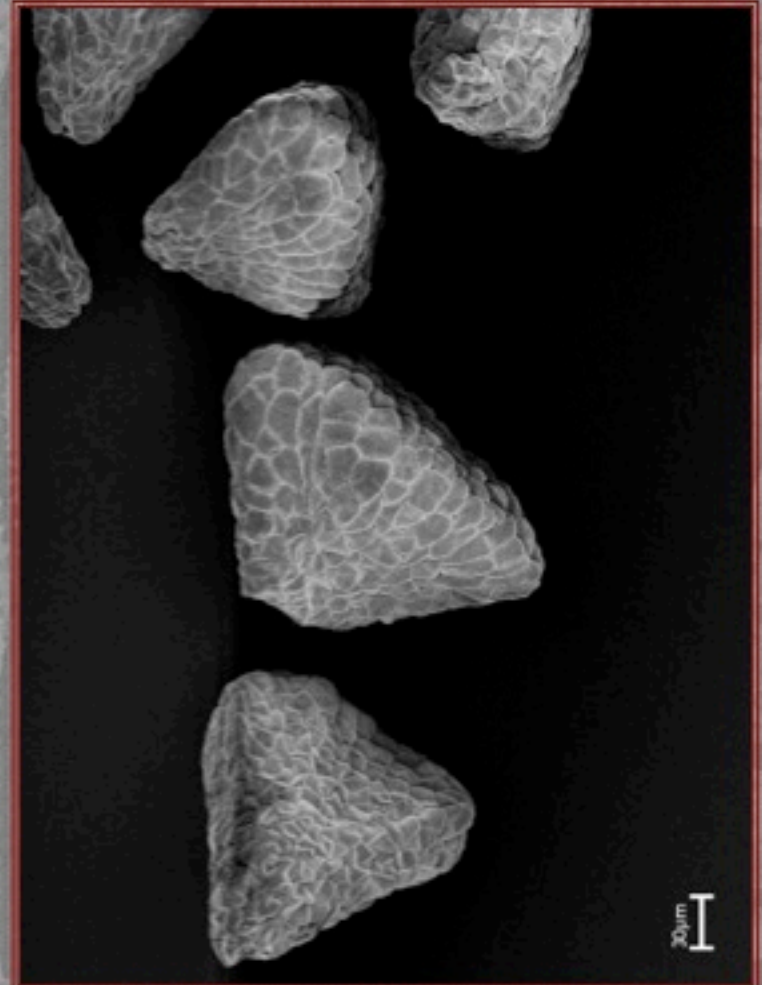
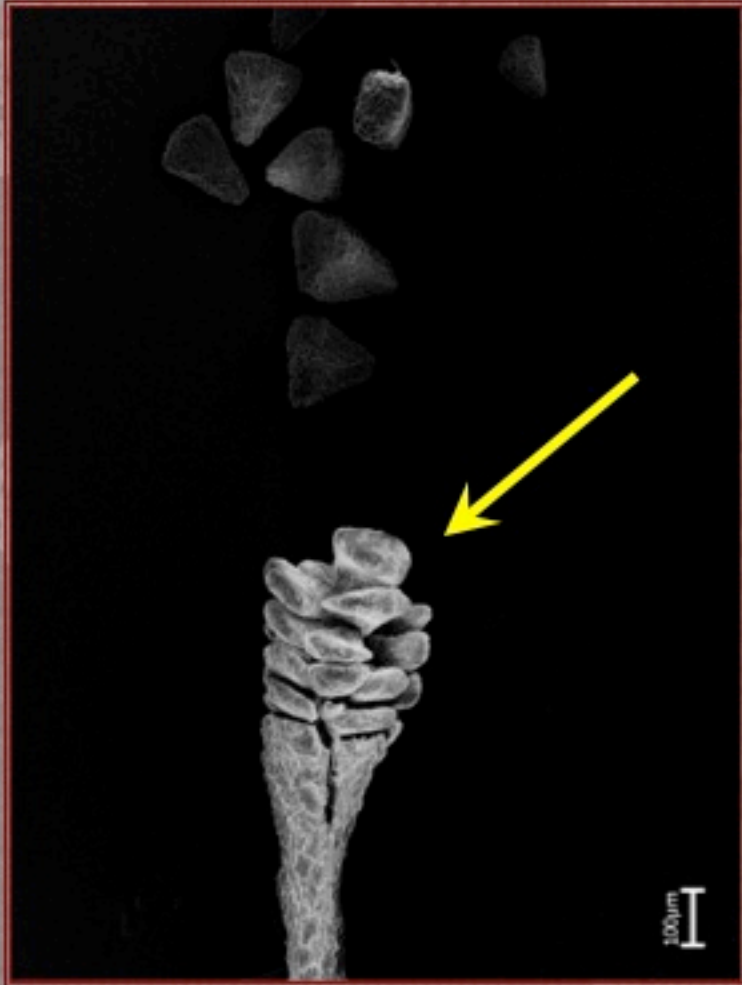


3µm

Plant taxonomy

- Pollen analysis has played a role in the re-classification of several 'primitive' genera of orchids in which the pollen was not tightly bound into masses (pollinia) as is typical with many genera.

Plant taxonomy-Orchidaceae

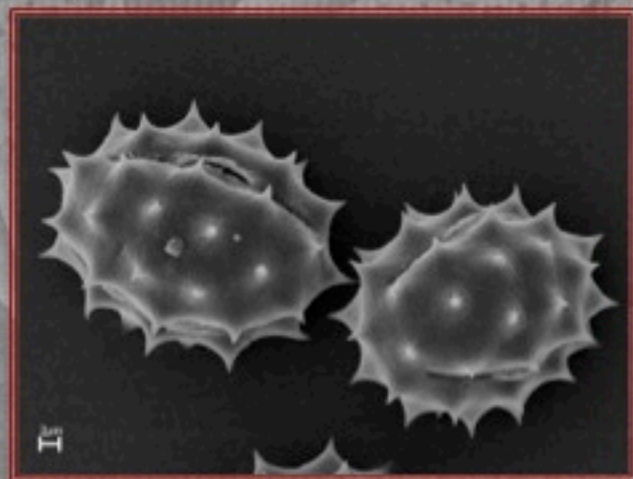
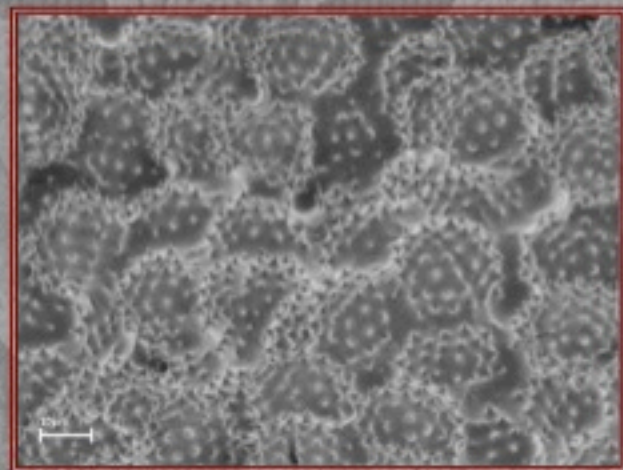


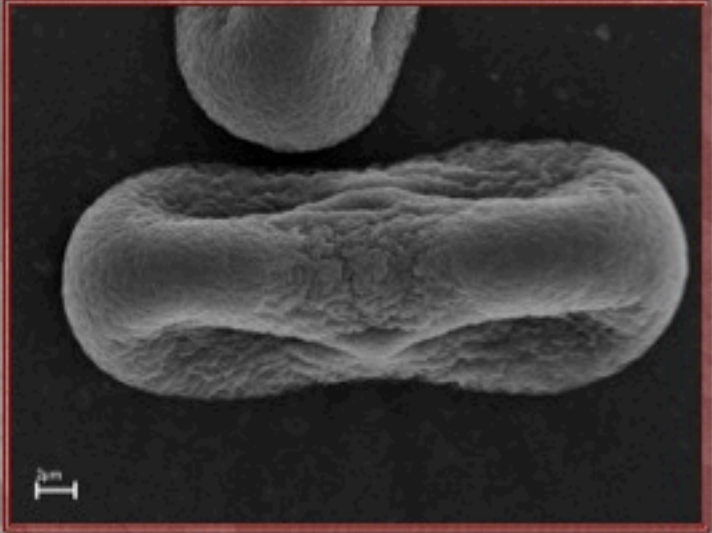
Genetic and evolutionary studies

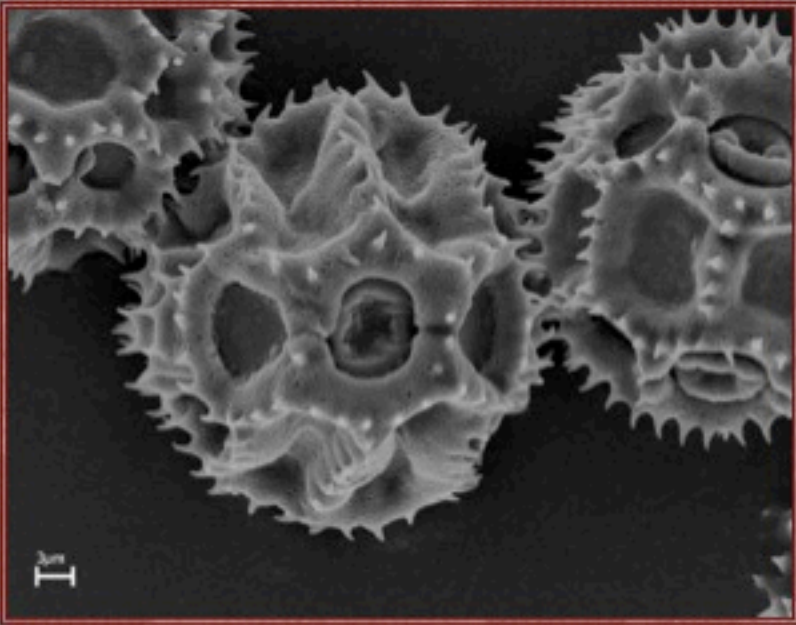
- Examination of the pollen grains of the recently discovered plant *Wollemia nobilis* by Dettmann and Jarzen (2000) found that the grains closely resembled the fossilized pollen of the species *Dilwynites* previously identified by Harris in 1965.



Melissopalynology







Comparative pollen morphology

